



HULAS
IRON INDUSTRIES LTD.

PRODUCT SPECIFICATION
2023 Brochure



APPROVED BY



BUILDING TRUST
FOR GENERATIONS



GHI
BALIYO
PRIME PIPES

PRODUCT SPECIFICATION
2023 Brochure



APPROVED BY



BUILDING TRUST
FOR GENERATIONS



HII BALIYO PRIME PIPES

HII Baliyo Prime Pipes are a premier offering from the [Hulas Iron Industries](#), specializing in the production of high-quality black pipes. These pipes are specifically designed to cater to the requirements of engineering & many other industries. One of the key strengths of HII Baliyo Prime Pipes lies in their versatility. This makes them a reliable choice for those seeking superior performance and longevity in their projects.

With their sleek black finish, HII Baliyo Prime Pipes not only provide a visually appealing aesthetic but also offer exceptional durability and reliability. These pipes have been carefully engineered to withstand demanding environments, ensuring their resilience and unwavering performance over time.

HII Baliyo Prime Pipes are known for their trustworthiness and enduring strength, making them an ideal solution for projects that require exceptional quality & reliability. Whether it's a complex mechanical system, a robust structural project or a general engineering application, including pipelines for water, gas, air, steam, & air, these pipes can deliver the performance needed to meet the demands of diverse industries.

PRODUCT RANGE



Circular Hollow Section
- 1/2" to 10"



Rectangular Hollow Section
- 25 x 38mm to 48 x 96mm



Square Hollow Section
- 19 x 19mm to 250 x 250mm

THICKNESS RANGE : 0.90MM TO 6.4MM

AREA OF USAGE



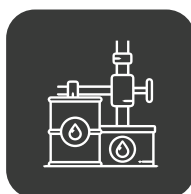
Construction



Fire Fighting



Gas Pipelines



Oil Pipelines

Steel Tubes for Mechanical & General Engineering Purposes

Conforming to IS : 3601-2006

Outside Diameter mm	Thickness mm	Mass Kg/m	Outside Diameter mm	Thickness mm	Mass Kg/m	Outside Diameter mm	Thickness mm	Mass Kg/m
21.3	1.8	0.866	60.3	2.3	3.29	139.7	6.3	16.8
	2	0.952		2.6	3.7		8	21.0
	2.6	1.20		2.9	4.11		8.8	22.9
	3.2	1.43		3.2	4.51		3.6	12.1
	4	1.71		3.6	5.03		4	13.4
26.9	1.8	1.11		4	5.55		4.5	15
	2	1.23		4.5	6.19		5	16.6
	2.3	1.4		5	6.82		5	16.6
	2.6	1.56		5.6	7.65		5.4	17.9
	3.2	1.87		6.3	8.39		6.3	20.7
33.7	4	2.26	76.1	2.6	5.24	165.1	8	26
	2	1.56		2.9	5.75		10	32
	2.3	1.78		3.2	6.44		4.5	17.8
	2.6	1.99		3.6	7.11		5	19.7
	3.2	2.41		4.5	7.95		5.4	21.2
42.4	4	2.93		5	8.77		6.3	24.8
	4.5	3.24		5.4	9.42		168.3	4
	2.3	2.27	6.3	10.8	4.5			18.2
	2.6	2.55	7.1	12.1	5			20.1
	3.2	3.09	88.9	2.9	6.15			5.4
3.6	3.44	3.2		6.76	6.3	25.2		
4	3.79	4		8.38	7.1	28.2		
5	4.61	5		10.3	8	31.6		
5.4	4.93	5.4		11.1	6	23.3		
48.3	2.3	2.61		5.6	11.5	5.4		25.1
	2.6	2.93		6.3	12.8	5.9		27.3
	2.9	3.25	8	16	6.3	29.1		
	3.2	3.56	114.3	3.2	8.77	8	36.6	
	3.6	3.97		3.6	9.83			
	4	4.37		4.5	12.2			
	4.9	5.24	5.4	14.5				
5	5.34							
5.6	5.9							
5.9	6.16							

Mechanical Properties IS : 3601-2006

S.No.	Tube Designation	Tensile Strength	Yield Stress	Elongation	
		Min.	Min.	As welded (Less than or equal to 33.7 mm OD)	As welded (more than 33.7mm OD)
1	WT 160	310	160	15	22
2	WT 210	330	210	12	20
3	WT 240	410	240	10	15
4	WT 310	450	310	6	10

Notes:

1. If tube in the as welded condition are subjected to annealing, brazing, welding or similar heating, it will deviate in the heat affected zone.
2. Welding of WT 310 grade may require special welding technique.
3. 1Mpa=0.1020kgt/mm²

Manufacturing Tolerance

S.No.	Over MM	Upto & Including MM	Tolerance on outside diameter mm
1	-	25.4	± 0.15
2	25.4	51	± 0.18
3	51	53.5	± 0.25
4	53.5	76.1	± 0.25
5	76.1	88.9	± 0.31
6	88.9	101.6	± 0.36
7	101.6	114.3	± 0.43
8	114.3	152.4	± 0.58
9	152.4	168.3	± 0.65
10	168.3	-	± 0.75

Technical Data of Hollow Steel Section RHS/SHS

Conforming to IS : 4923-2017

A Square (SHS)								
Size	Depth or Width	Thickness	Weight	Area of Section	Moment of Inertia	Radius of Gyration	Elastic Modulus	Plastic Modulus
mm x mm	mm	mm	kg/m	cm ²	cm ⁴	cm	cm ³	cm ³
25 X 25	25	2.5	1.69	2.16	1.72	0.89	1.38	1.76
	25	3.2	1.98	2.53	1.89	0.86	1.51	1.98
32 x 32	32	2.5	2.26	2.88	4.02	1.18	2.51	3.11
	32	3.2	2.69	3.42	4.54	1.15	2.84	3.59
	32	4.0	3.19	4.07	5.02	1.11	3.14	4.11
38 x 38	38	3.2	3.29	4.19	8.18	1.40	4.3	5.34
	38	3.6	3.63	4.62	8.76	1.38	4.61	5.8
	38	4.0	3.95	5.03	9.26	1.36	4.87	6.22
49.5 x 49.5	49.5	2.9	4.07	5.19	18.37	1.88	7.42	8.93
	49.5	3.6	4.93	6.28	21.42	1.85	8.66	10.6
	49.5	4.5	5.95	7.58	24.64	1.80	9.96	12.47
60 x 60	60	3.2	5.5	7.00	36.94	2.3	12.31	14.73
	60	3.6	6.11	7.79	40.45	2.28	13.48	16.22
	60	4.5	7.43	9.47	47.2	2.23	15.73	19.32
72 x 72	72	3.2	6.71	8.54	66.32	2.79	18.42	21.8
	72	4	8.22	10.47	79.03	2.75	21.95	26.32
	72	4.8	9.66	12.31	90.31	2.71	25.09	30.49
91.5 x 91.5	91.5	3.6	9.67	12.32	156.49	3.56	34.21	40.24
	91.5	4.5	11.88	15.14	187.57	3.52	41.00	48.79
	91.5	5.4	14.01	17.85	215.68	3.48	47.14	56.77
100 x 100	100	4	11.74	14.95	226.35	3.89	45.27	53.3
	100	5	14.41	18.36	271.10	3.84	54.44	64.59
	100	6.0	16.98	21.63	311.47	3.79	62.29	75.10
113.5 x 113.5	113.5	4.5	14.99	19.10	372.88	4.42	65.71	77.33
	113.5	4.8	15.92	20.28	393.31	4.4	69.3	81.81
	113.5	5.4	17.74	22.6	432.58	4.38	76.23	90.55
132 x 132	132	4.8	18.71	23.83	634.39	5.16	96.12	112.69
	132	5.4	20.88	26.59	700.11	5.13	106.08	125.02
150 x 150	150	4.0	18.01	22.95	807.83	5.93	107.71	124.87
	150	5	22.26	28.36	982.13	5.89	130.95	152.98
	150	6	26.4	33.63	1145.92	5.84	152.79	179.89

Tolerance on Thickness & Mass	
Thickness for all Sizes	± 7.5%
On Individual Length	Weight
	+7%
On Lots Of 10 Tonnes	-8%
	± 7%
Outside Dimensions	± 1% of length of the side to be measured Of Sides with a minimum Of ± 0.5mm
Squareness of Corner	90° ± 2°
Radius Of Corners Outside	3T, max where T is the thickness Of section



Steel Grade Available
YST210/YST240/YST310

Can Roll in Specific
Thickness & Length aslo

B. Rectangular (RHS)													
Designation	Depth of Section	Width of Section	Thickness	Weight	Area of Section	Moment of Intertia		Radius of Gyration		Elastic Modulus		Plastic Modulus	
						X-X	Y-Y	X-X	Y-Y	X-X	Y-Y	X-X	Y-Y
mm x mm	mm	mm	mm	kg/m	cm ²	cm ⁴	cm ⁴	cm	cm	cm ³	cm ³	cm ³	cm ³
50 x 25	50	25	2.9	2.98	3.8	10.93	3.6	1.70	0.97	4.37	2.88	5.72	3.48
	50	25	3.2	3.24	4.13	11.63	3.8	1.68	0.96	4.65	3.04	6.14	3.73
60 x 40	60	40	2.9	4.12	5.25	24.74	13.11	2.17	1.58	8.25	6.56	10.25	7.73
66 x 33	66	33	2.9	4.07	5.19	27.33	9.12	2.29	1.33	8.28	5.53	10.59	6.49
	66	33.0	3.6	4.93	6.28	31.87	10.52	2.25	1.29	9.66	6.37	12.56	7.66
	66	33	4.5	5.95	7.58	36.64	11.93	2.2	1.25	11.10	7.23	14.77	8.94
80 x 40	80	40	2.9	5.03	6.41	50.87	17.11	2.82	1.63	12.72	8.56	16.07	9.88
	80	40	3.2	5.5	7.01	54.94	18.41	2.8	1.62	13.74	9.21	17.46	10.72
	80	40	4	6.71	8.55	64.79	21.49	2.75	1.59	16.2	10.74	20.91	12.77
96 x 48	96	48	3.2	6.71	8.54	98.61	33.28	3.4	1.97	20.54	13.87	25.85	15.91
	96	48	4	8.22	10.47	117.54	39.32	3.55	1.94	24.49	16.3	31.21	19.14
	96	48	4.8	9.66	12.31	134.35	44.55	3.3	1.9	27.99	18.56	36.13	22.08



For Use in Water, Gas, Steam & Air Pipelines

Conforming to IS : 1239 (Pt 1) - 2004, Equivalent to EN - 10255 : 2004

Class	Nominal Bore		Outside Diameter		Wall Thickness	Nominal weight of steel Tubes			
	mm	inch	Minimum	Maximum		Plain End		Screwed & Socketed	
	mm	inch	mm	mm	mm	kg/mtr	Mtrs/tonne	kg/mtrs	mtrs/tonne
Light	15 L	1 / 2	21	21.4	2	0.947	1056	0.956	1046
	20 L	3 / 4	25.4	26.9	2.3	1.38	725	1.39	719
	25 L	1	33.2	33.8	2.6	1.98	505	2	500
	32 L	1.1/4	41.9	42.5	2.6	2.54	394	2.57	389
	40 L	1.1/2	47.8	48.4	2.9	3.23	310	3.27	306
	50 L	2	59.6	60.2	2.9	4.08	245	4.15	241
	65 L	2.1/2	75.2	76	3.2	5.71	175	5.83	172
	80 L	3	87.9	88.7	3.2	6.72	149	6.89	145
Medium	100 L	4	113	113.9	3.6	9.75	103	10	100
	15 M	1/2	21	21.8	2.6	1.21	826	1.22	820
	20 M	3/4	25.5	27.3	2.6	1.56	641	1.57	637
	25 M	1	33.3	34.2	3.2	2.41	415	2.43	412
	32 M	1.1/4	42	42.9	3.2	3.1	323	3.13	319
	40 M	1.1/2	47.9	48.8	3.2	3.56	281	3.6	278
	50 M	2	59.7	60.8	3.6	5.03	199	5.1	196
	65 M	2.1/2	75.3	76.6	3.6	6.42	156	6.54	153
	80 M	3	88	89.5	4	8.36	120	8.53	117
	100 M	4	113.1	115	4.5	12.2	82	12.5	80
Heavy	125 M	5	138.5	140.8	4.8	15.9	63	16.4	61
	150M	6	163.9	166.5	4.8	18.9	53	19.5	51
	15 H	1/2	21.0	21.8	3.2	1.44	694	1.45	690
	20 H	3/4	25.5	27.3	3.2	1.87	535	1.88	532
	25 H	1	33.3	34.2	4	2.93	341	2.95	339
	32 H	1.1/4	42	42.9	4	3.79	264	3.82	262
	40 H	1.1/2	47.9	48.8	4	4.37	229	4.41	227
	50 H	2	59.7	60.8	4.5	5.19	162	5.26	160
	65 H	2.1/2	75.3	76.6	4.5	7.93	126	8.05	124
	80 H	3	88	89.5	4.8	9.9	101	10.1	99
	100 H	4	113.1	115	5.4	14.5	69	14.8	68
125 H	5	138.5	140.8	5.4	17.9	56	18.4	54	
150 H	6	163.9	166.5	5.4	21.3	47	21.9	46	

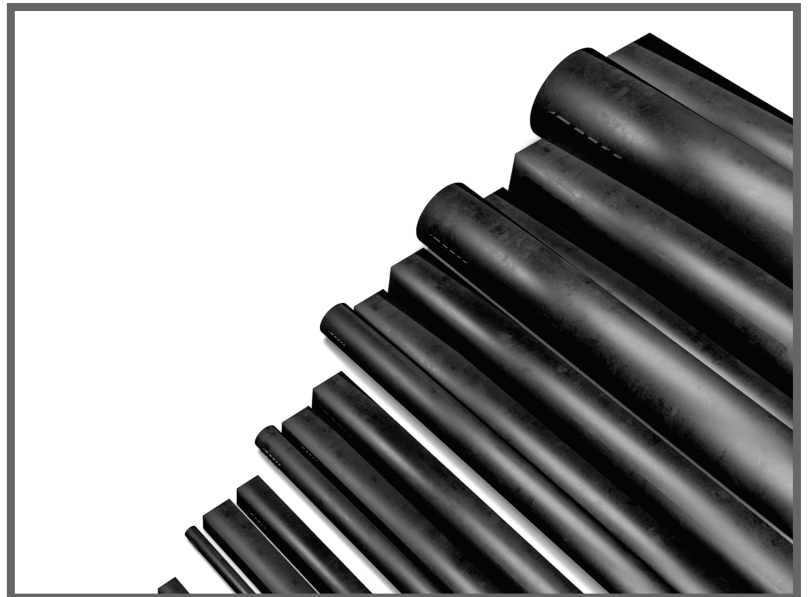
Steel Tubes for Structural Purposes

Conforming to IS : 1161-2014

NB	Outside diameter	Thikness	Norinal Weight of Black Tubes	
			Kg/Mrt.	Mtr/Ton
mm	mm	mm		
15	21.3	2.00	0.952	1050
		2.60	1.200	834
		3.20	1.430	699
20	26.9	2.30	1.400	714
		2.60	1.560	641
		3.20	1.870	535
25	33.7	2.60	1.990	503
		3.20	2.410	415
		4.00	2.930	341
32	42.4	2.60	2.550	392
		3.20	3.090	324
		4.00	3.790	264
40	48.3	2.90	3.250	308
		3.20	3.560	281
		4.00	4.370	229
50	60.3	2.90	4.1 10	243
		3.60	5.030	199
		4.50	6.190	162
65	76.1	2.90	5.240	191
		3.60	6.440	155
		4.50	7.950	126
80	88.9	3.20	6.760	148
		4.00	8.380	1 19
		4.80	9.960	100
90	101.6	3.60	8.700	1 15
		4.00	9.630	104
		4.80	11.460	87
100	114.3	3.60	9.830	102
		4.50	12.190	82
		5.40	14.500	69
110	127	4.50	13.590	74
		4.80	14.470	69
		5.40	16.190	62
125	139.7	4.50	15.000	67
		4.80	15.970	63
		5.40	17.890	56
135	152.4	4.50	16.410	61
		4.80	17.470	57
		5.40	19.580	51
150	165.1	4.50	17.820	56
		4.80	18.980	53
		5.40	21.270	47
150	168.3	4.50	18.180	55
		4.80	19.350	52
		5.40	21.690	46
		6.30	25.170	40
175	193.7	4.80	22.360	45
		5.40	25.080	40
		5.90	27.330	37
200	219.1	4.80	25.370	39
		5.60	29.490	34
		5.90	31.020	32

Physical Properties			
Grade	Y-S (min) MPa (kg/mm2)	T.S. (Min) MPa (kg/mm2)	Elongation
YST-210	210 (21.42)	330 (33.66)	20
YST-240	240 (24.48)	410 (41.82)	17
YST-310	310 (31.62)	450 (45.90)	14

Tolerance	
Outside Diameter upto & including 48.3 mm	+ 0.4 mm
	- 0.8 mm
Over 48.3 mm	1%
Thickness	± 10%
Weight	
For Single Tube	± 10%
For 10 Tonne Lot	7.50%





PRODUCT SPECIFICATION
2023 Brochure



APPROVED BY



BUILDING TRUST
FOR GENERATIONS



HII DEEGO SS PIPES

HII Deego SS pipe is a long stainless steel tube used to transport water, gas, oil, or other materials. Because of stainless steel's strong corrosion resistance, it is employed in applications involving high temperatures, corrosive fluids, and high contaminant levels.

When you're picking pipes for your building job, it's really important that they last a long time and work well. Our black pipes are made to be tough and trustworthy, so they can handle hard situations and keep working for a long time.

PRODUCT RANGE



Circular Hollow Section
- 1/2" to 2.5"



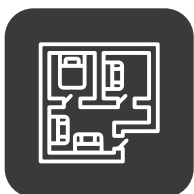
Rectangular Hollow Section
- 20 x 40mm to 25 x 50mm



Square Hollow Section
- 20 x 20mm to 50 x 50mm

THICKNESS RANGE : 1.15MM TO 1.40MM

AREA OF USAGE



Interior Design



Balcony

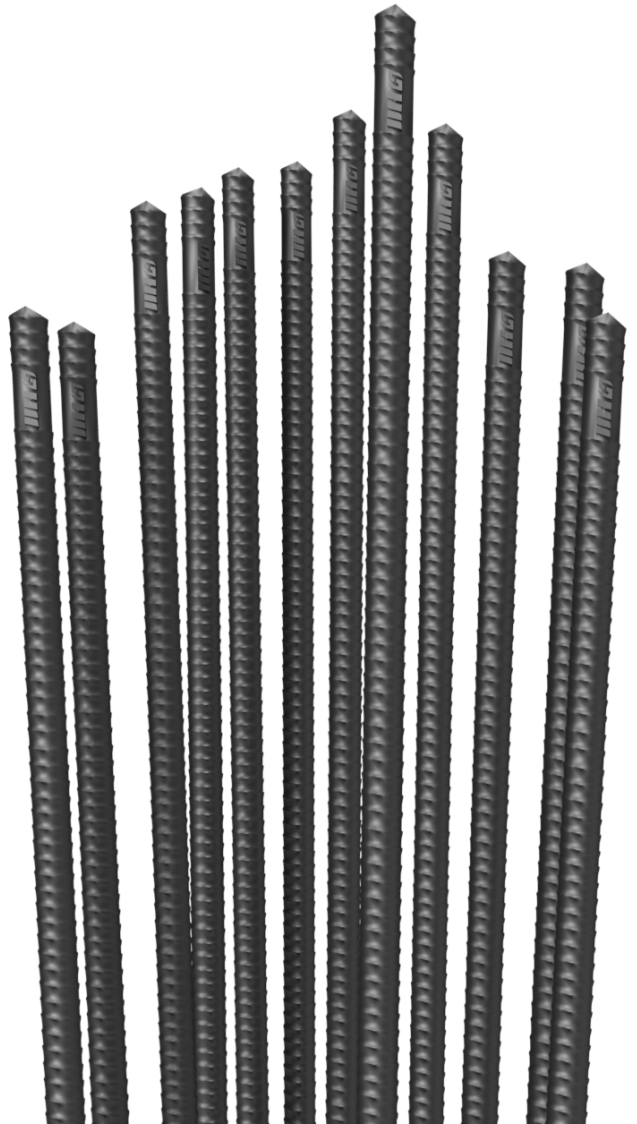


Railing



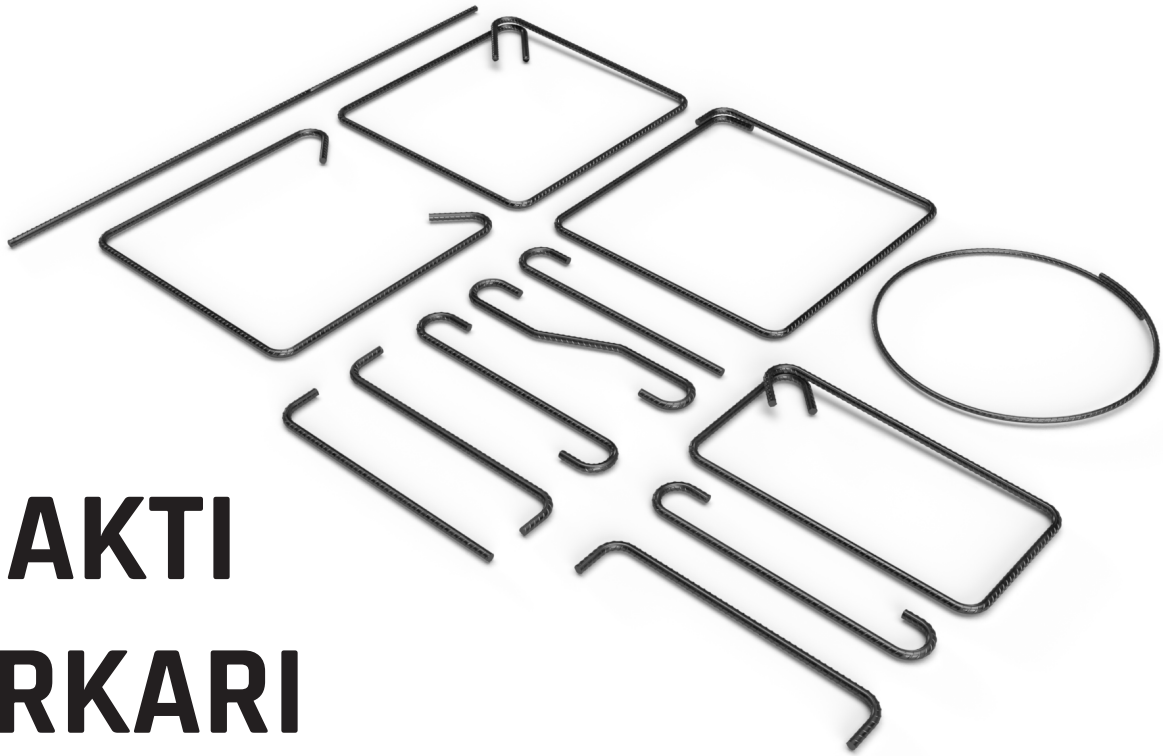
PRODUCT SPECIFICATION
2023 Brochure

BUILDING TRUST
FOR GENERATIONS



APPROVED BY





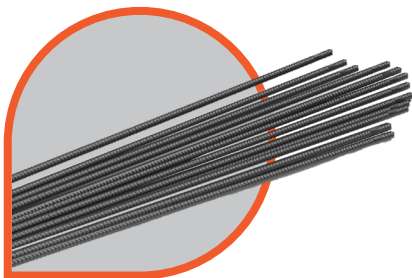
HII

SHAKTI TORKARI

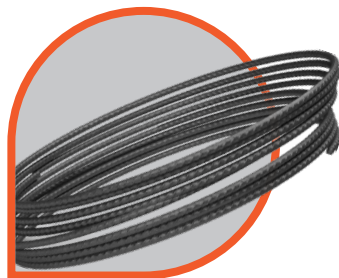
HII Shakti Torkari is a high strength and high bond reinforcing steel rod, mostly used as reinforcement bar (rebar) for the concrete in the construction.

Our torkari is a type of strong steel rod that builders often use in construction. These steel rods, sometimes called rebars, are really important in making concrete structures sturdy. They give concrete extra strength and support. When you're building something, it's super important to use good-quality steel for this job. HII Shakti Torkari steel rods are top-notch and made just for construction. They're built from really strong steel and follow really strict quality rules.

PRODUCT RANGE



Straight Length - 7.0mm
Tolerance +/- 4%



Coil Form - 4.75mm
Tolerance +/- 4%

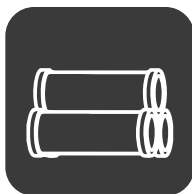
AREA OF USAGE



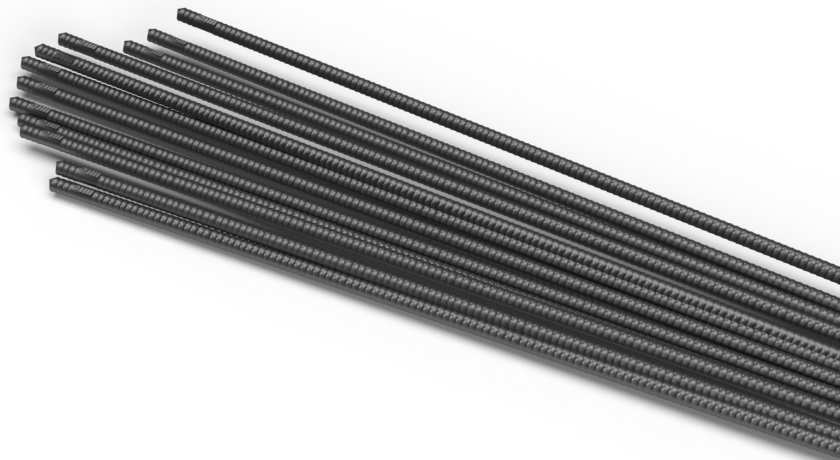
Construction



Structure



Hume Pipe





PRODUCT SPECIFICATION
2023 Brochure

BUILDING TRUST FOR GENERATIONS



APPROVED BY





HII SHARP NAILS

HII Sharp Nails are usually used for joining pieces of wood or for fastening other materials to wood. They are simply hammered into place and are held there by friction.

Our nails are super strong and can handle really tough situations, making them great for any job. You can get them in different sizes to fit your project perfectly, which makes them really useful for all sorts of things. These nails are made from really good materials and are designed very carefully to work really well.

PRODUCT RANGE

Size (Inch)	Wire Size mm
1"	2mm
1.5"	2.30mm
2"	2.60mm
2.5"	3.25mm
3"	3.60mm
4"	4.0mm

AREA OF USAGE



Construction



Fabrication



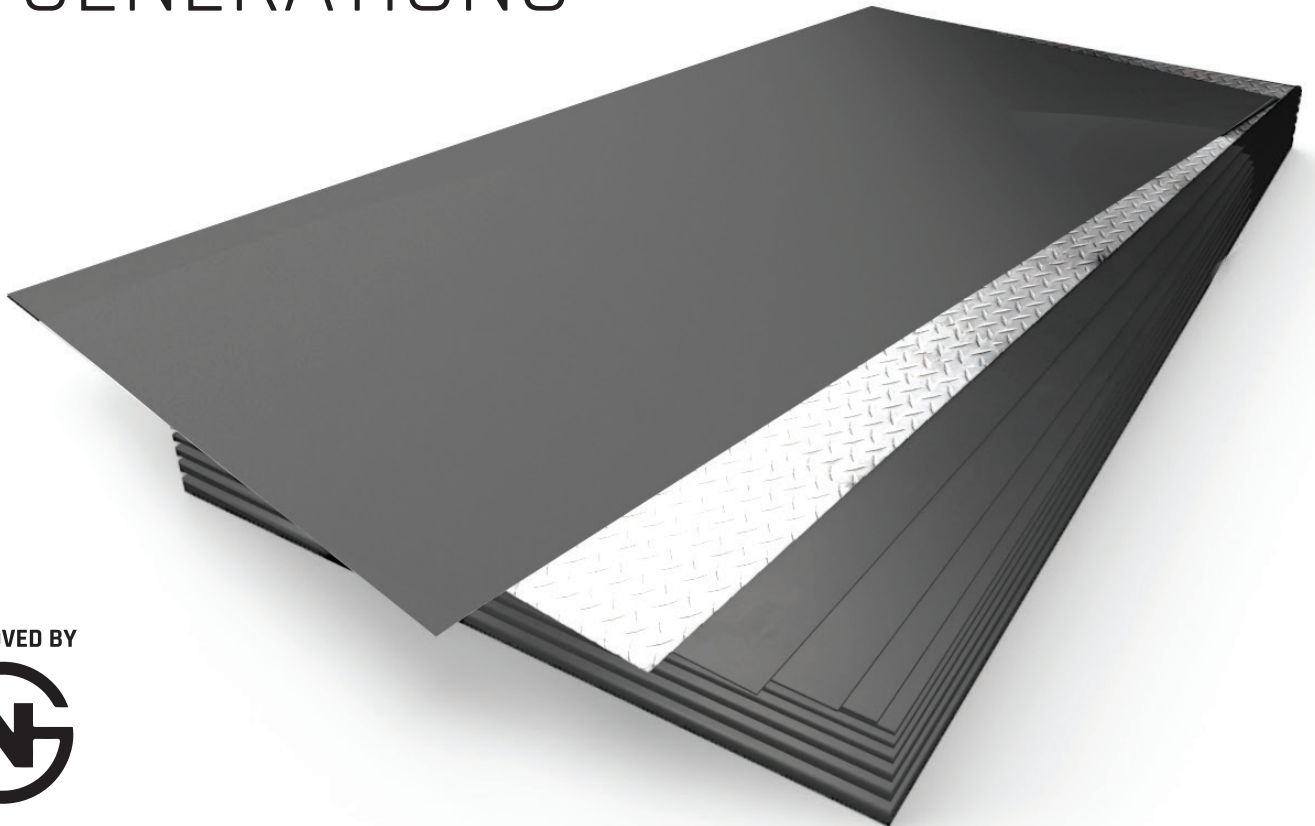
Household





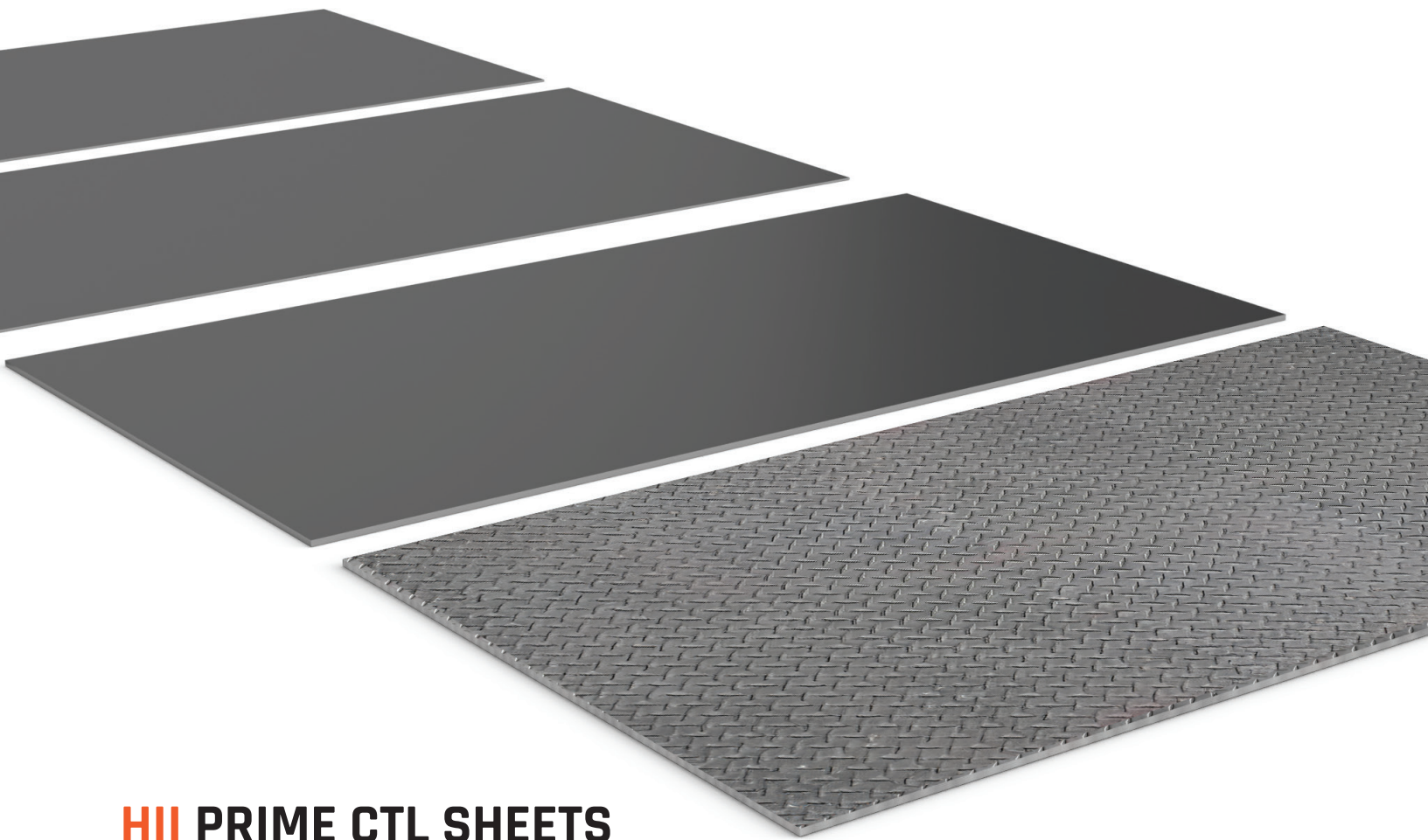
PRODUCT SPECIFICATION
2023 Brochure

BUILDING TRUST
FOR GENERATIONS



APPROVED BY



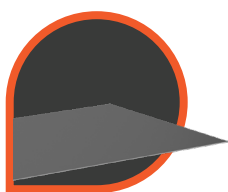


HII PRIME CTL SHEETS

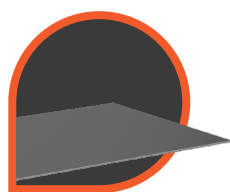
HII Prime CTL Sheets typically refer to a sheet or coil of material, such as steel, aluminum, or other metals, that is custom-cut to specific dimensions according to project requirements. These sheets are often used in various construction and manufacturing processes where precise sizing is crucial.

Our custom-cut sheets are made very carefully to fit your project just right. We use really advanced technology to make sure they're the exact size and shape you want. These sheets are strong and long-lasting because we use really good materials. If you need a specific size, thickness, or look, we can make it exactly the way you need it to make sure your project goes well.

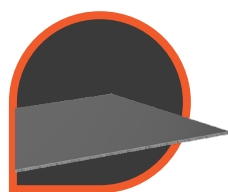
PRODUCT RANGE



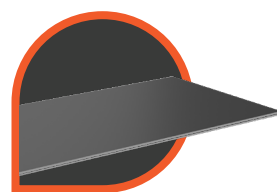
Ordinary MS Sheet



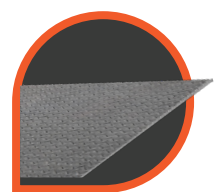
E250 Grade Sheet



E350 Grade Sheet



CRCA Sheet



Chequered Sheet

AREA OF USAGE



Fabrication



Pole Base Plate



Tower



Bridge



Partition

Weight Chart HR Sheet

S. No.	THICKNESS	SIZE	MAX. WEIGHT / PIECE (KG)
1	1.20 mm	1220 x 2440	28
2	1.40 mm	1220 x 2440	32
3	1.50 mm	1220 x 2440	35
4	1.60 mm	1220 x 2440	37
5	1.80 mm	1220 x 2440	42
6	2.00 mm	1220 x 2440	47
7	2.20 mm	1220 x 2440	53
8	2.30 mm	1220 x 2440	54
9	2.40 mm	1220 x 2440	56
10	2.50mm	1220 x 2440	58
11	2.65 mm	1220 x 2440	60
12	2.80 mm	1220 x 2440	65
13	2.85 mm	1220 x 2440	68
14	3.00 mm	1220 x 2440	70
15	3.10mm	1220 x 2440	72
16	3.50 mm	1220 x 2440	82
17	3.85mm	1220 x 2440	90
18	4.00 mm	1220 x 2440	93
19	4.30 mm	1220 x 2440	101
20	4.60 mm	1220 x 2440	108
21	5.00 mm	1220 x 2440	117
22	6.00 mm	1220 x 2440	140
23	8.00 mm	1220 x 2440	190
24	10.00 mm	1220 x 2440	235
25	12.00 mm	1220 x 2440	280
26	16.00 mm	1250 x 2500	380
27	20.00 mm	1250 x 2500	470
28	25.00mm	1250 x 2500	585

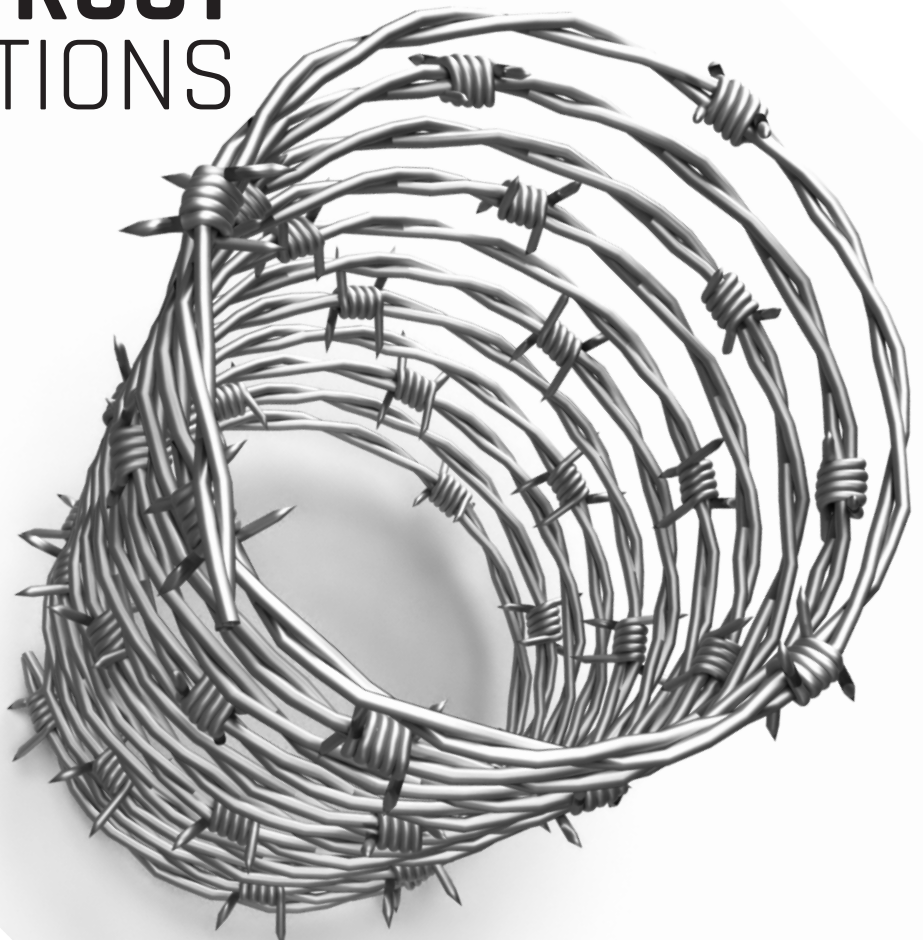
Weight Chart CR Sheet

S. No.	THICKNESS	SIZE	MAX. WEIGHT / PIECE (KG)
1	0.35 mm	1220 x 2500	8.600
2	0.37 mm	1220 x 2500	9.100
3	0.40 mm	1220 x 2500	9.900
4	0.45 mm	1220 x 2500	10.800
5	0.50 mm	1220 x 2500	12.000
6	0.52 mm	1220 x 2500	12.200
7	0.54 mm	1220 x 2500	13.100
8	0.57 mm	1220 x 2500	13.800
9	0.58 mm	1220 x 2500	13.850
10	0.68 mm	1220 x 2500	16.500
11	0.80 mm	1220 x 2500	19.200
12	0.85 mm	1220 x 2500	19.500
13	0.90 mm	1220 x 2440	21.500
14	1.10 mm	1220 x 2440	25.700
15	1.30 mm	1220 x 2440	30.500
16	1.40 mm	1220 x 2440	31.500
17	1.50 mm	1220 x 2440	34.500



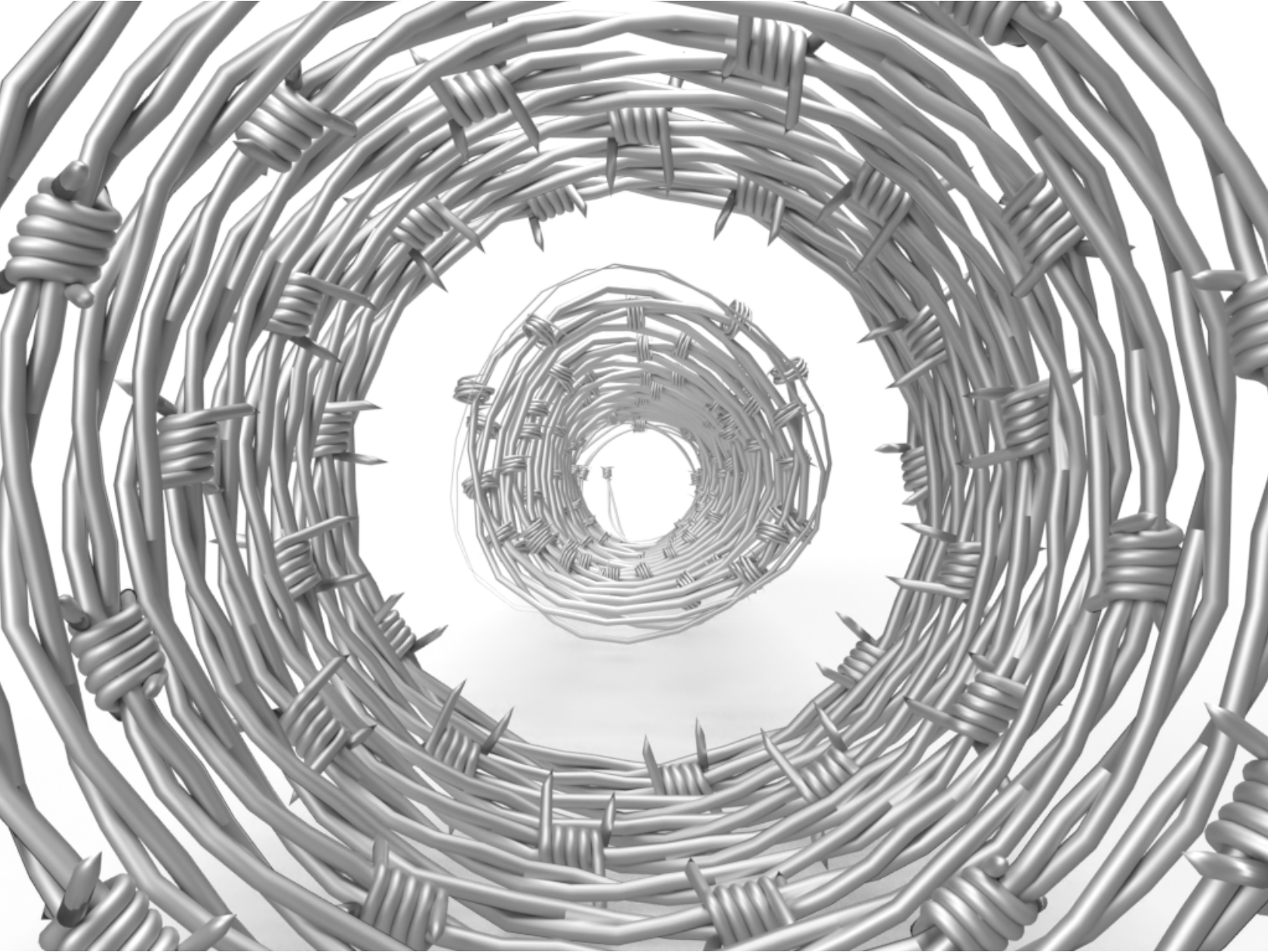
PRODUCT SPECIFICATION
2023 Brochure

BUILDING TRUST
FOR GENERATIONS



APPROVED BY





HII BARBED WIRE

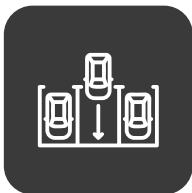
HII Barbed wire is a type of steel fencing wire constructed with sharp edges or points arranged at intervals along the strands.

HII's barbed wire is your best bet for keeping things safe and protected. It's made from really good stuff and designed to be super strong and last a long time. This wire can handle tough weather and won't easily get rusty or damaged. Whether you're safeguarding a construction area, a farm, or any place, HII's barbed wire is the smartest choice for a fence that sticks around and works well.

AREA OF USAGE



Fencing



Parking Lot



Backyard

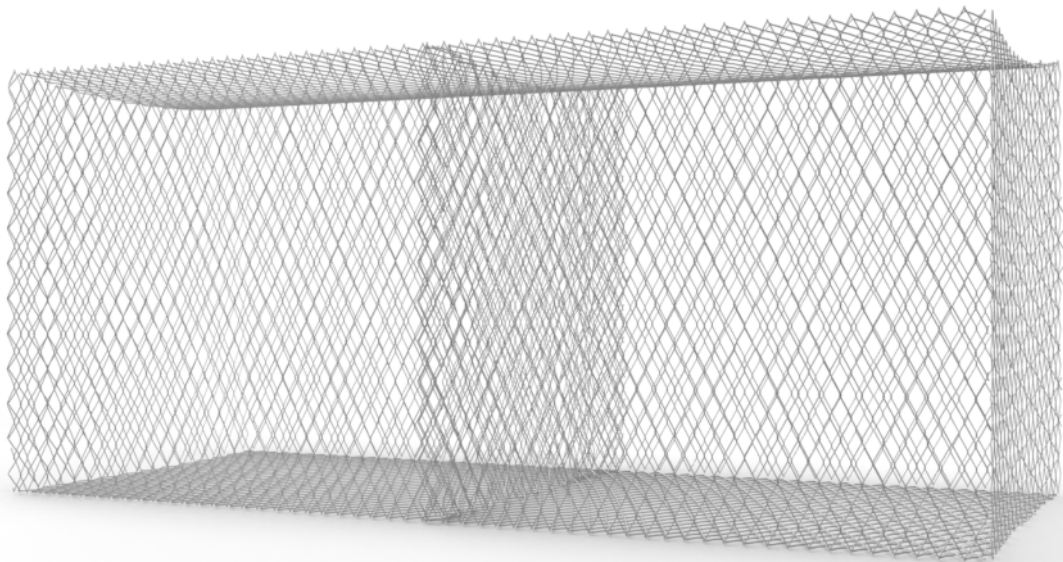


Farmland





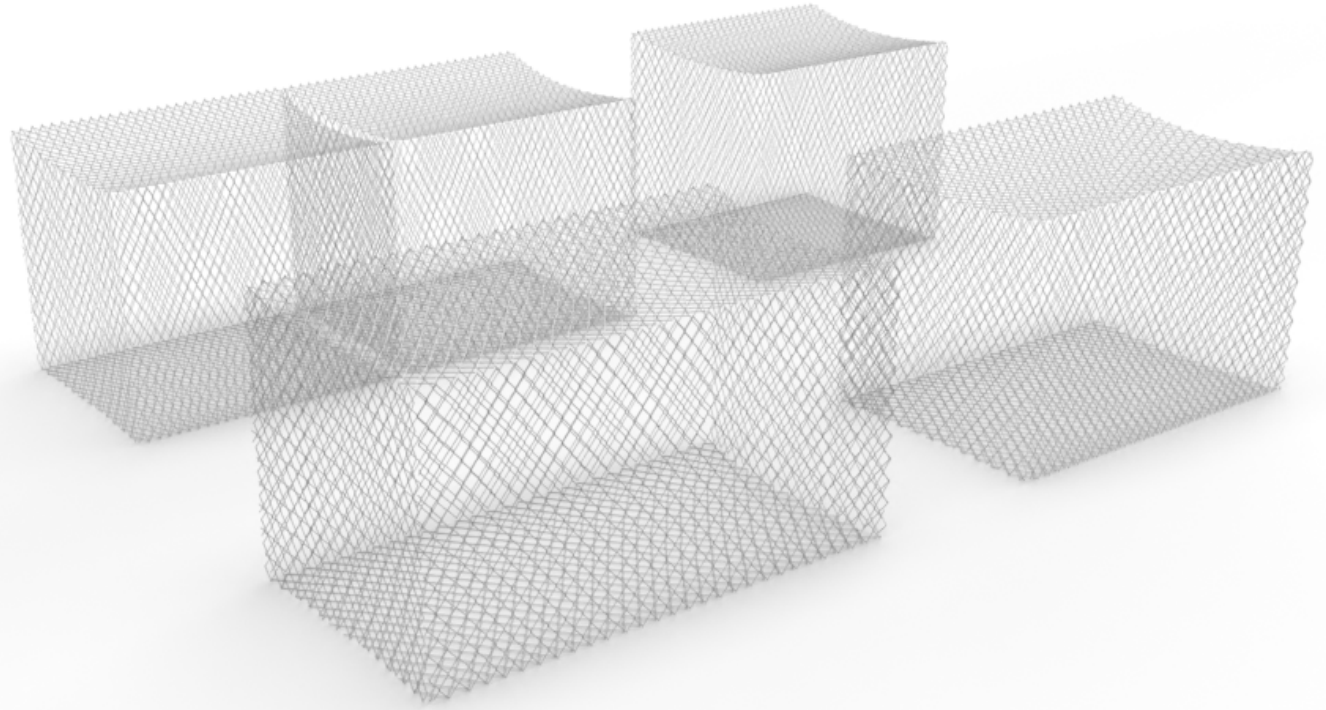
PRODUCT SPECIFICATION
2023 Brochure



APPROVED BY



BUILDING TRUST
FOR GENERATIONS



HII DARO PAKAD - GABION

HII Daro Pakad Gabions are rectangular baskets fabricated from a hexagonal mesh of heavily galvanized steel wire. The baskets are filled with rock and stacked atop one another to form a gravity- type wall.

Our special boxes called gabion boxes are built super tough to handle Nepal's rough land. They're made from really strong materials and are great for making strong walls, stopping erosion, and doing other tough jobs in Nepal's tricky terrain.

PRODUCT RANGE

Gabion Size (mtrs)	Partition Size (mtr)	No of Pcs/Partitions	Total SQM of Box	Weight of Gabion Box (Kgs)	No of Pieces in Bundle	Total SQM / Bundle	Total Weight / Bundle (kgs)
L1.5xW1xH1	1X1	2	8	14	30	240	420
L2xW1xH0.5	1X0.5	3	7.5	7.50	30	225	225
L2xW1xH1	1X1	3	11	18.70	30	330	561
L3xW1.5xH0.5	1.5X0.5	4	15	25.5	15	225	383
L3xW1.5xH1	1.5X1	4	21	34.5	15	315	517.6
L3xW1xH0.5	1X0.5	4	11	18.8	20	220	376
L3xW1xH1	1X1	4	16	26.5	15	240	397
L3xW2xH1	2X1	4	26	42.9	10	390	429
L4xW1xH1	1X1	5	21	34.4	15	315	516

AREA OF USAGE



Slope
Stabilization



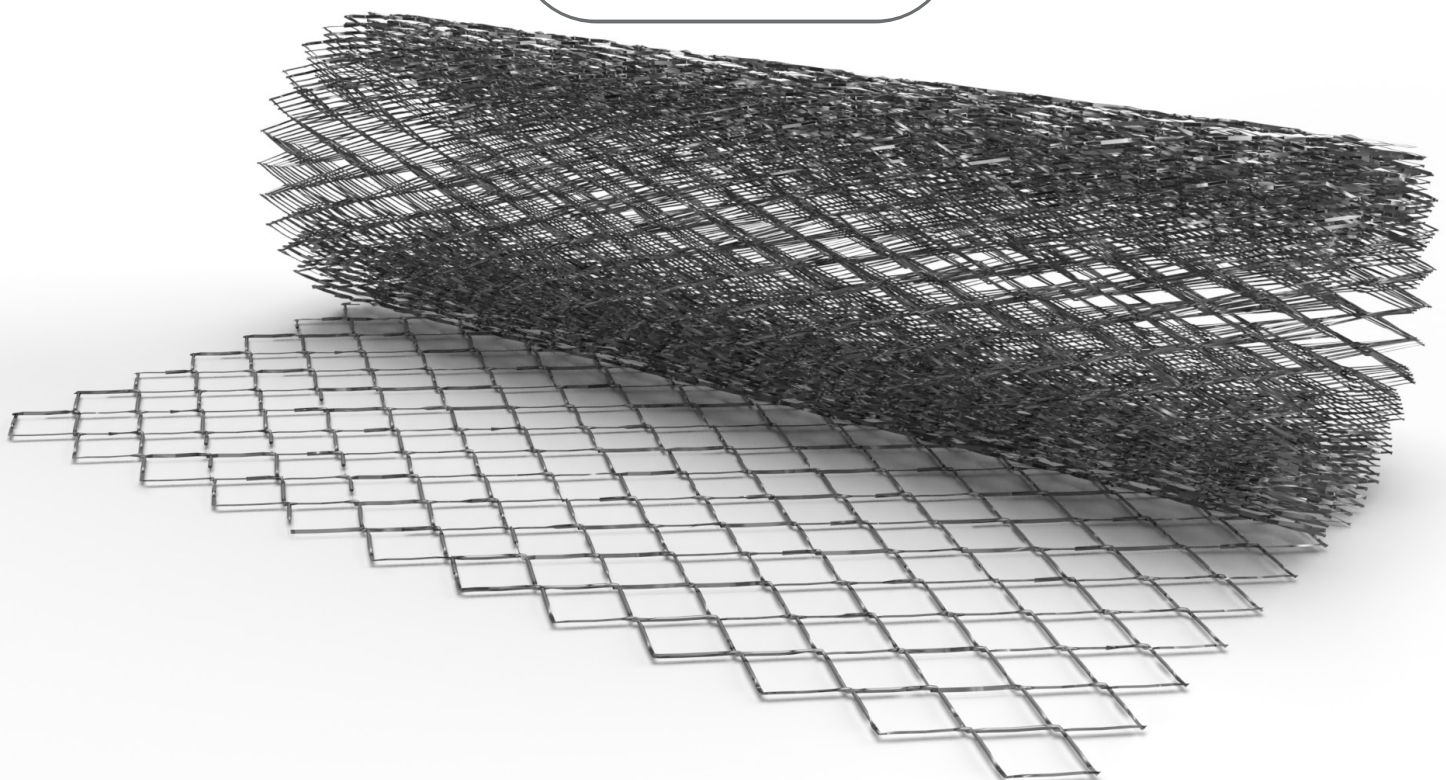
Damp
Proofing



Road
Construction



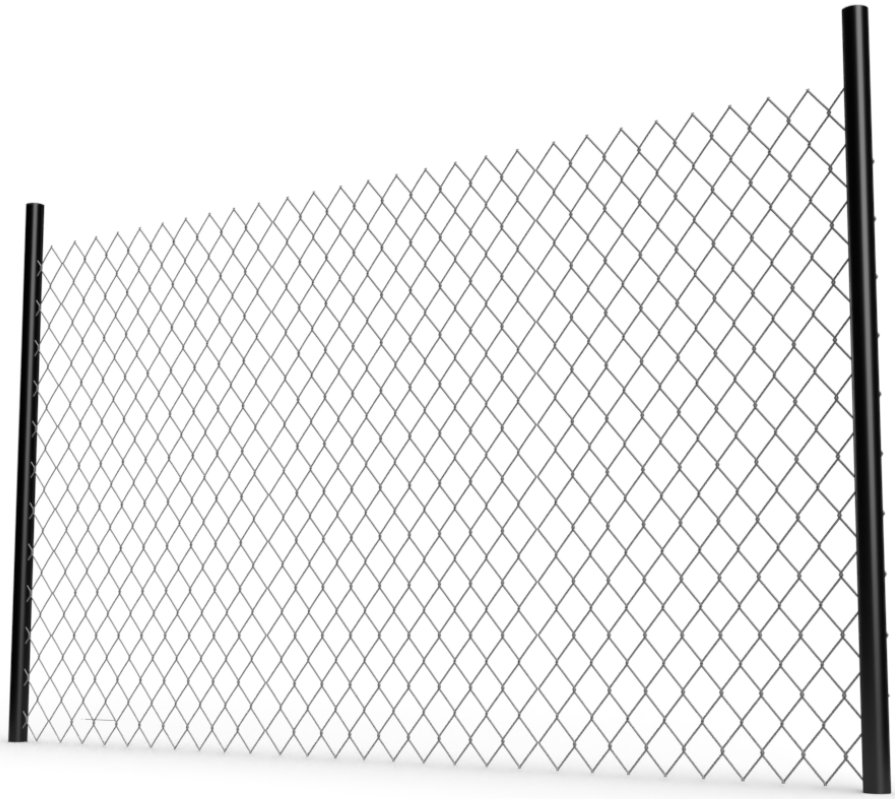
PRODUCT SPECIFICATION
2023 Brochure



APPROVED BY



BUILDING TRUST
FOR GENERATIONS



HII CHAIN LINK

HII Chain Link is a type of woven fence usually made from galvanized steel wire.

When it comes to protecting your place, don't go for anything but the best. Pick HII's chain link fencing for super strength and lasting power. Our fencing can handle really hard situations, and it won't get rusty or damaged easily. Whether you're securing a building site, a business area, or anywhere else, HII's chain link fencing is the smartest choice for a fence that lasts and does its job well.

PRODUCT RANGE

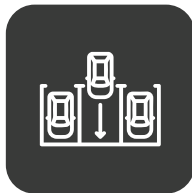
SIZE	WIRE THICKNESS		
	2.64	3	3.25
50X50	ok	ok	ok
75X75	ok	ok	ok
100X100	ok	ok	ok

Available Roll Widths : 3, 4, 5, 6 & 7 FT

AREA OF USAGE



Fencing



Parking Lot



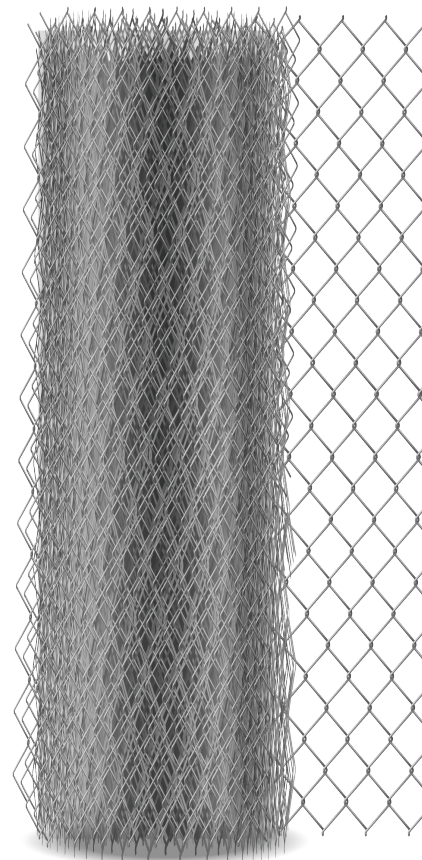
Backyard



Farmland



Animal Cage





GHI
BINDING WIRON
BINDING WIRE

PRODUCT SPECIFICATION
2023 Brochure



APPROVED BY



BUILDING TRUST
FOR GENERATIONS

HII BINDING

WIRON

HII Binding Wiron is used for the purpose of tying applications in the field of construction.

Feel super sure about your construction projects by using HII's super-strong binding wiron. It's made from really good stuff and designed carefully to be tough and last a long time. No matter if you're tying together rebar, wire mesh, or anything else in construction, HII's binding wire is the smartest pick for making things stick together securely. Count on HII's top-quality binding wire because it's the toughest and most dependable choice for all your construction jobs.



PRODUCT RANGE



20g (0.90mm)
Tolerance = +/- 0.05 mm
Bundle : 25 Kgs



22g (0.70mm)
Tolerance = +/- 0.05 mm
Bundle : 25 Kgs

AREA OF USAGE



Construction



Structure



Household





PRODUCT SPECIFICATION
2023 Brochure



BUILDING TRUST
FOR GENERATIONS

APPROVED BY





HII WIRON

GI HEAVY

HII Wiron is a GI wire that is corrosion-resistant and has high tensile strength, making it ideal for use in the earthing system. They are commonly used in industrial and commercial buildings, power plants and substations to protect equipment and people from electrical hazards.

Get the strongest and toughest wire with HII's Galvanized Iron (GI) heavy wire. This wire can handle really tough situations & it won't get rusty or damaged easily. Whether you're using it for building stuff, in factories, or on farms, HII's GI heavy wire is the smartest pick for a wire that lasts a long time and works well.

PRODUCT RANGE

Type	Size	Coating (gms/mtr ²)
Heavy	4.06	280
	3.9	280
Medium	3.25	270
	3	240
Light	2.64	250
	2.4	240

AREA OF USAGE



Construction



Structure



Household





HULAS

IRON INDUSTRIES LTD.



(+977) 01-5970085



www.hulasgroup.com



marketing@hulasiron.com



Head Office :

6th Floor, Aamir Bhawan, Kamaladi
Ganesthan, Kathmandu-28, Nepal

Plant

Bindabasini-02, Birgunj, Parsa,
Narayani, Nepal

